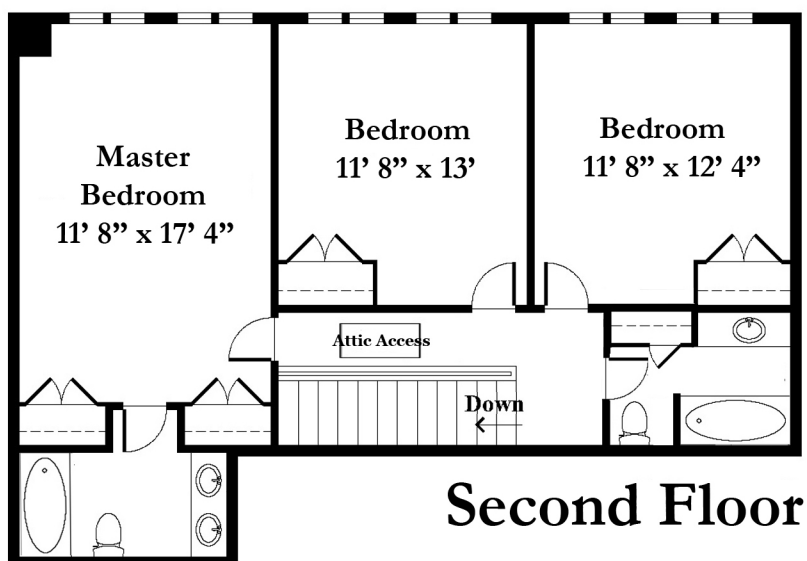
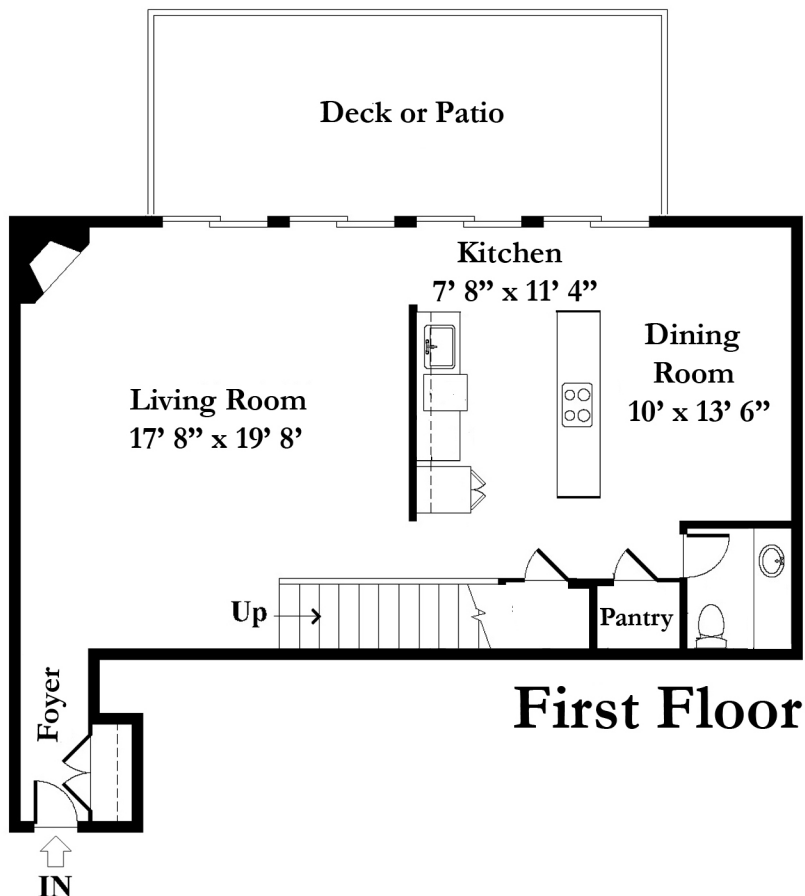


Amalfi

3 bedroom, 2 1/2 bath - 1620 s.f



Created by:
Krys Streeter Photo
www.krysphoto.com
978-590-2210

*Floor plans reflect standard model offerings. All measurements are approximate. Variations exist based upon location and topography. Some units (e.g., Longwood, Amalfi and Cortina) have full basements that may be finished or unfinished. Some units (e.g., Longwood and Amalfi) have attic storage the full length of the unit.